

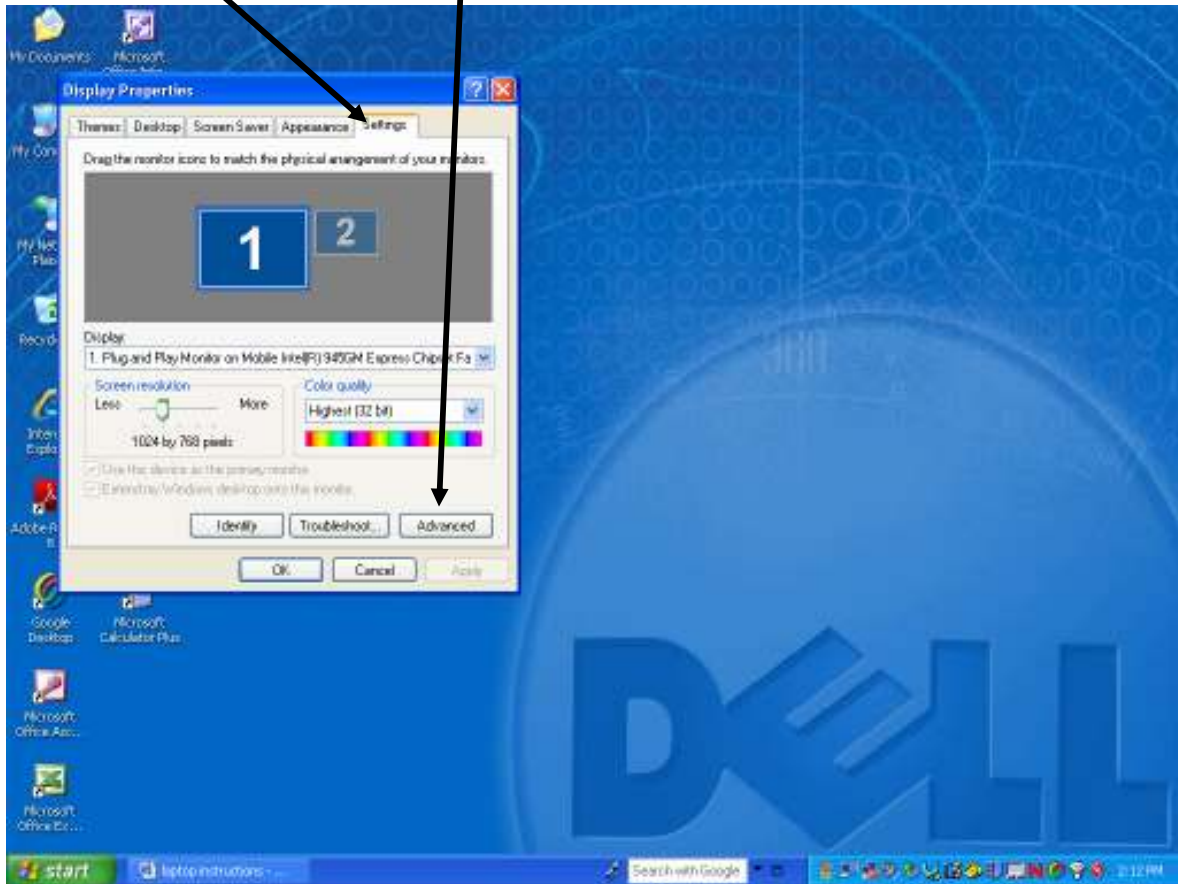
Laptop & Projector Setup

We have had calls regarding some of the HP laptops and projectors not working together properly. It appears that the laptops in some of the buildings don't display an image on the monitor (display) when hooked up to a projector on boot up. There are several laptops that need proper video calibration before using them with the projectors. In other words, the computer is confused as to where it should display the video. Below are steps to configuring your laptop so that the laptop displays the proper image, while at the same time projecting the image onto the wall from the projector.

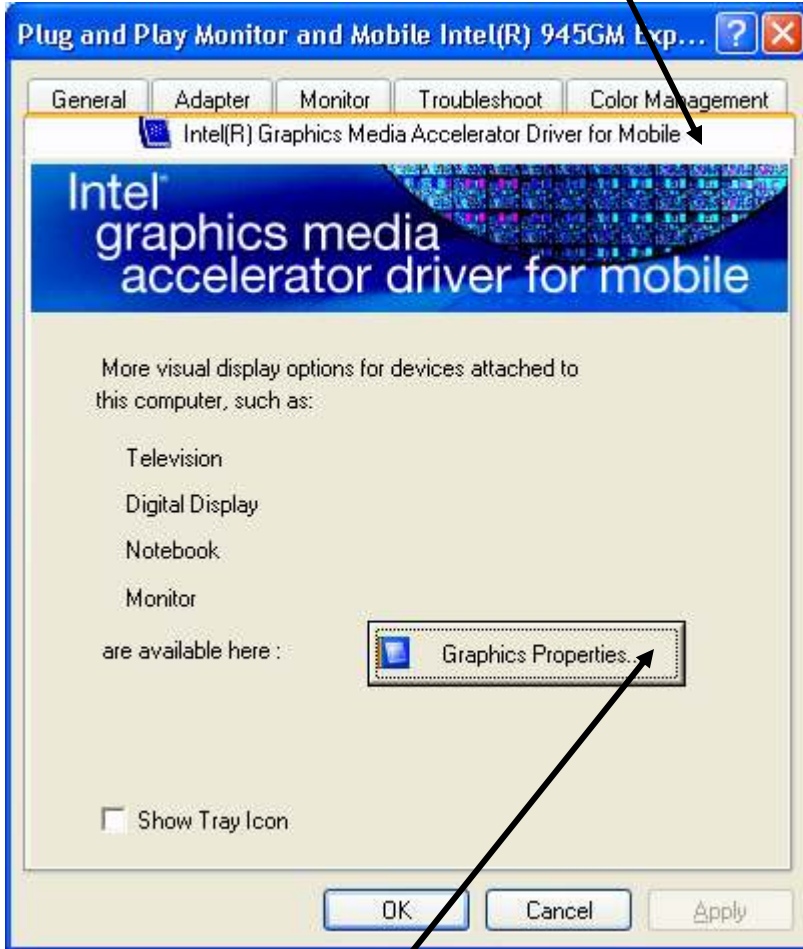
1. If the display or monitor does not work on the Laptop...
2. Make sure the computer is hooked up to the projector, move them someplace in the room where you can display onto a wall or screen, then turn on the projector.
3. You should see the display on the projector screen.
4. Login, then right click on the background and select "Properties"



5. Click Settings then click on Advanced



6. Click on Intel Graphics Media Accelerator



8. Then Graphics Properties

9. Click on the button by Twin Display or Dual Display then OK, OK and finally, OK.

